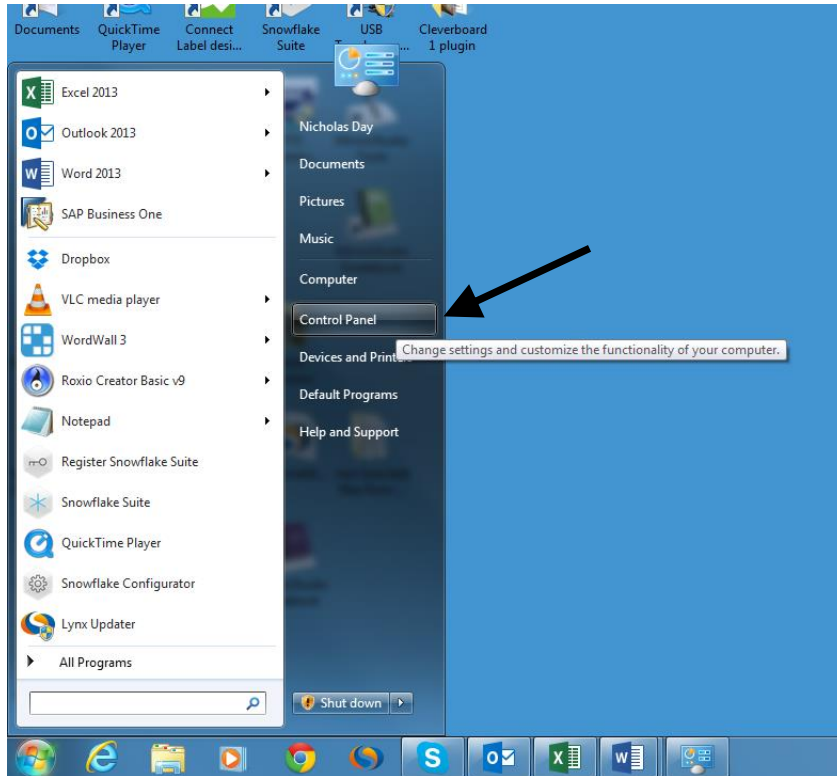


## Enabling touch functions in the Google Chrome browser.

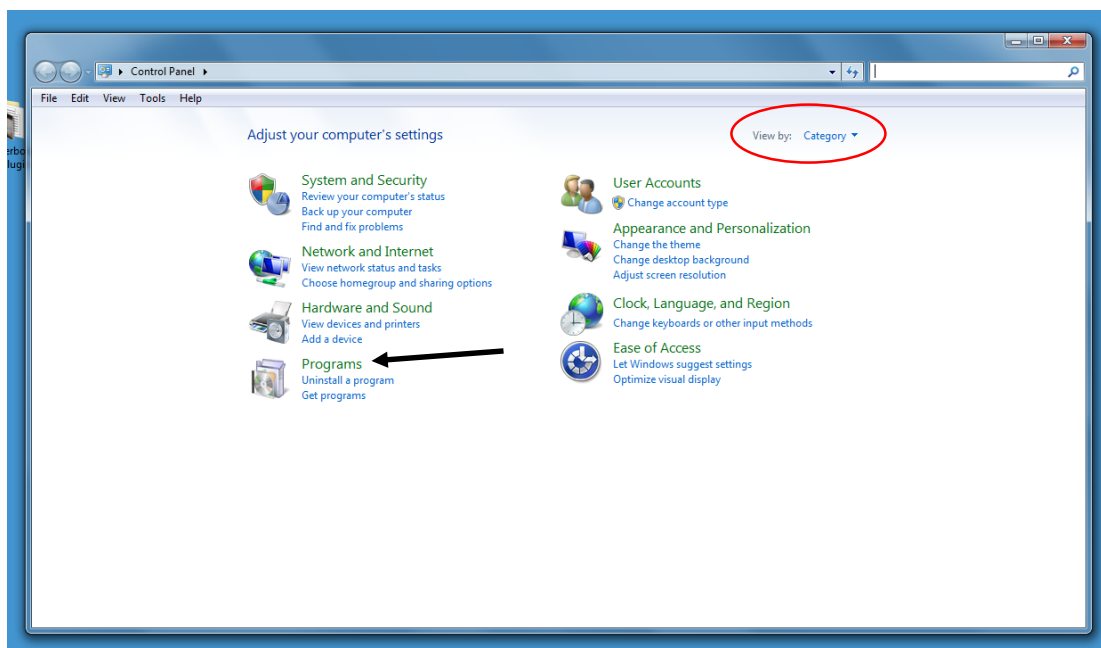
Before beginning this process please save any work and exit applications as it may ask for the PC to be restarted to make changes.

Start by opening the Start menu and selecting the Control Panel button as shown here.

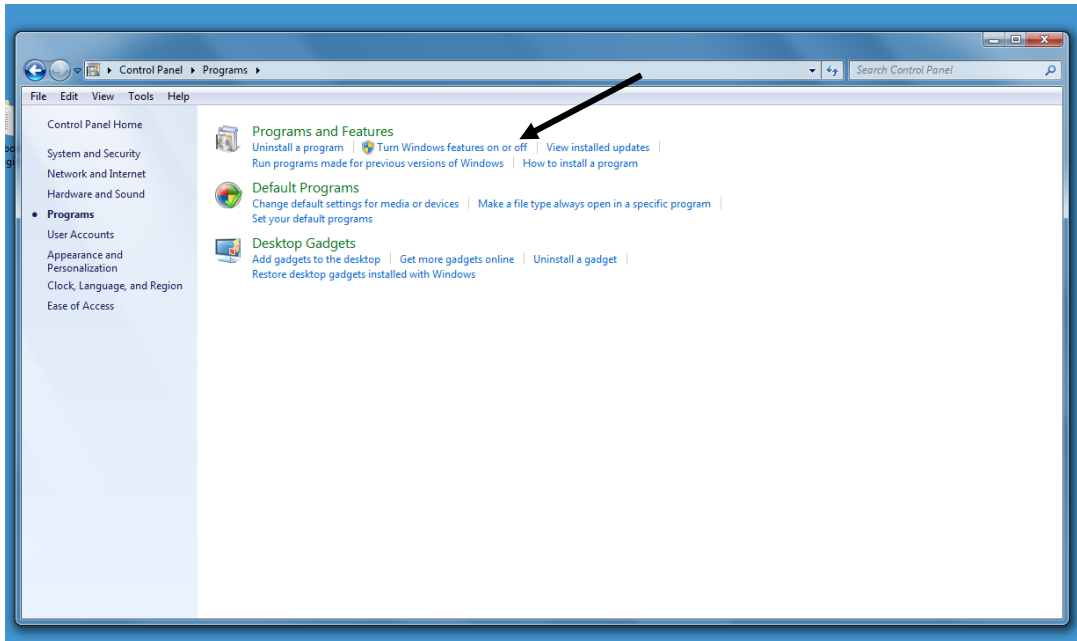


This will open the Control Panel window. If it does not look like the window shown below it may be in a slightly different display mode. If required change the 'View by:' option to Category as circled.

Next select the Programs heading shown in green font.



In the window shown below select the option 'Turn Windows features on or off'



A new smaller window will appear and at first ask you to wait, please allow it to complete this stage.

When finished it should display a list of topics with tick boxes. Scroll down till you locate Tablet PC Components. Tick this box. Then select OK. It will give a message and then perhaps ask for a PC restart to make changes. Following this touch should be enabled in the Google Chrome browser.

